

## HC-IPC-T4214-0360G



### Product Features

- ≥ 4MP (2688x1520) @30fps
- ≥ Support H265+/H264+/H265/H264/MJPEG coding
- ≥ ICR auto switch, true day/night
- ≥ Motorized lens
- ≥ 3D DNR, true WDR, HLC, BLC and ROI coding
- ≥ Built-in micro SD card slot, up to 256GB
- ≥ DC12V/AC24V/PoE power supply
- ≥ Support three streams
- ≥ IP67
- ≥ Support mobile surveillance by smart phones with iOS and Android OS
- ≥ Intelligent analytics: license plate recognition, vehicle type detection.



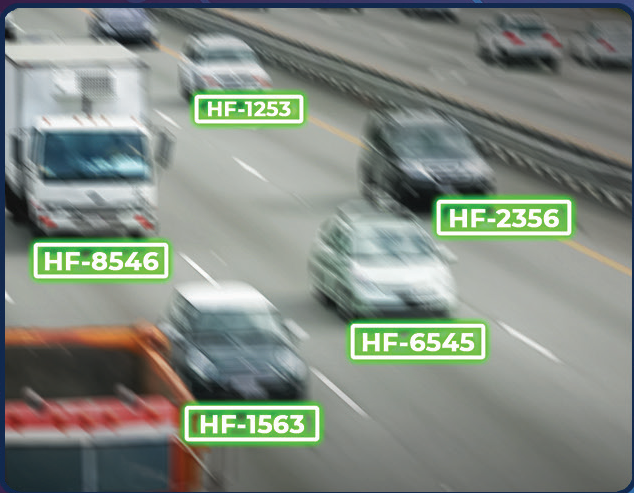
# High-End Edge-Based AI Computing for ANPR



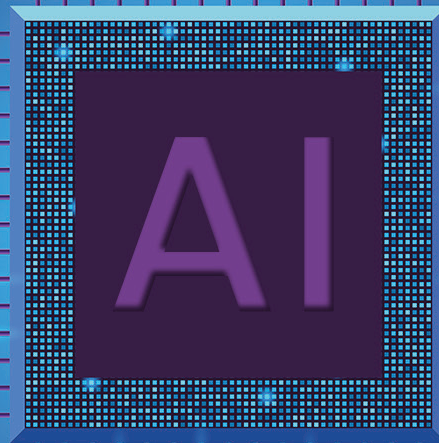
TN-02-TT-XXXX



Real-Time & On-Device Processing – Reduces dependency on external servers, enabling ultra-fast and reliable plate detection.



AI-Powered Precision – Identifies license plates with high accuracy, even at high speeds and in poor lighting conditions.





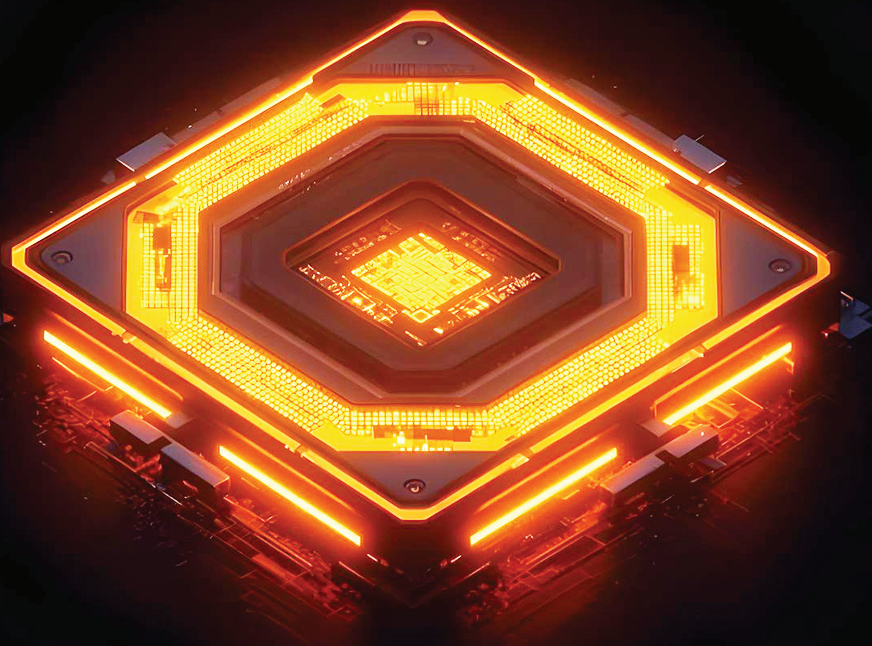
**4MP HD Resolution**



**Normal view**



**Exceptional Image Quality – Delivers sharp, clear images, ensuring precise license plate recognition.**



**Superior Low-Light Performance – The 1/1.8" sensor enhances image brightness and clarity in night-time and low-light environments.**



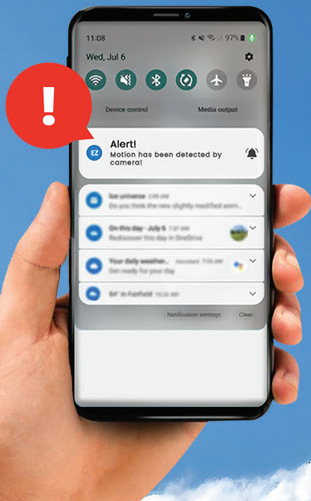
**Wide Field of View – Captures vehicles from multiple angles with minimal distortion.**



# HIGH FRAME RATE MODE

– 1080P @ 50/60FPS

Smooth Video Capture – Ensures lag-free, high-speed video streaming for real-time plate recognition.



## Alarm Smart Security

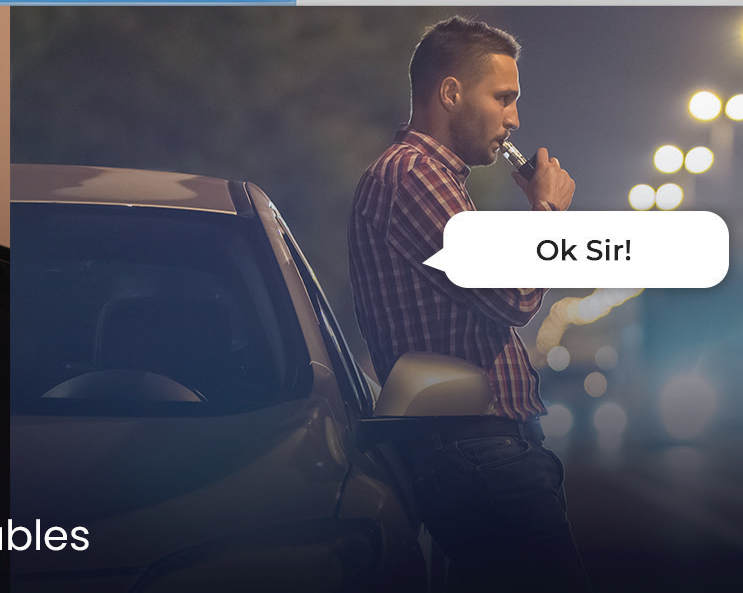
Trigger Alarms & Notifications – Integrates with external alarm systems for instant response to suspicious vehicles.



Please do not park your car over here!

**Two-Way Audio Communication** – Enables direct interaction with drivers via built-in microphone and speaker.

Ok Sir!





## Specifications :

### CAMERA

Image Sensor	1 / 1.8" CMOS
Image Size	2688 × 1520
Electronic Shutter	Manual or auto; manual: 1 / 1 s ~ 1 / 100000s
Iris Type	DC Iris
Min. Illumination	0.001 lux@F1.6, AGC ON; 0 lux with IR
Lens	2.8~12mm / 8~32mm/5~50mm(Optional)
Field of View (H)	100.4°~49° / 41°~15.5°
Lens Mount	Integrated
Recommended ANPR Distance	3~8m / 7~30m/16-48m
Wide Dynamic Range	120dB
BLC	Yes
HLC	Yes
Defog	Yes
Digital NR	3D DNR
S/N Ratio	≥50dB
Angle Adjustment	Pan: 0°~360°; Tilt:0°~90°; Rotation: 0°~360°

### VIDEO

Video Compression	Main stream: H.265+ / H.265 / H.264+ / H.264 Sub stream: H.265+ / H.265 / H.264+ / H.264 / MJPEG Third stream: H.265+ / H.265 / H.264+ / H.264 / MJPEG
H.264 Compression Standard	Baseline Profile/Main Profile/High Profile
Resolution	4MP (2688 ×1520), 2K (2560 ×1440), 3MP (2304 ×1296), 1080P (1920 ×1080), 720P (1280 ×720), D1, CIF
Main Stream	4MP/2K/3MP/1080P (60Hz :1 ~ 30fps; 50Hz: 1 ~ 25fps) HFR Mode: 1080P/720P (60Hz: 1~60fps; 50Hz: 1~50fps)
Sub Stream	720P/D1/CIF (60Hz :1 ~ 30fps; 50Hz: 1 ~ 25fps)
Third Stream	D1/CIF (60Hz :1 ~ 30fps; 50Hz: 1 ~ 25fps)



An ISO 9001:2008 Certified Company



Bit Rate	64 Kbps ~ 8 Mbps
Bit Rate Type	VBR / CBR
Audio Compression	G711A / U
Image Settings	ROI, Saturation, Brightness, Hue, Contrast, Wide Dynamic, Sharpness, Image Mirror, Image Flip, NR, etc. adjustable through client software or web browser
ROI	Each ROI to be configured separately

### **INTERFACES**

Network	RJ 45 10M/100M Self-adaptive Ethernet port
Video Output	CVBS output (BNC× 1)
Audio	1CH audio input; 1CH audio output
Storage	Built-in micro SD card slot; up to 256GB
Reset	Yes
Alarm	1CH alarm input; 1CH alarm output
RS 485	Yes
RS 232	Yes

### **FUNCTIONS**

Remote Monitoring	Web Browser/NVR/mobile APP
Online Connection	Support simultaneous monitoring for up to 10 users; Support multi-stream real time transmission
Network Protocol	UDP, IPv4, IPv6, DHCP, NTP, RTSP, RTP, RTMP, RTCP, PPPoE, DDNS, SMTP, FTP, SNMP, HTTP, HTTP POST, 802.1x, UPnP, HTTPs, P2P, QoS
Interface Protocol	ONVIF
Storage	Network remote storage; micro SD card storage
Smart Alarm	Motion detection, sensor alarm, SD card error, SD card full, IP address conflict, cable disconnection



An ISO 9001:2008 Certified Company



Intelligent Analytics	License plate recognition, vehicle type detection, video exception detection
General Function	Watermark, video mask, heartbeat, corridor mode
Security	Video encryption, firmware encryption, HTTPs encryption, configuration encryption, illegal login lock, IP address filtering, 802.1x authentication, basic and digest authentication for HTTP/HTTPs
PoE	Yes, IEEE802.3af
IR Distance	50~70m / 70~100m
Protection Grade	IP67

**LPR**

Snapshot	Overview and cutout of plate for picture
Vehicle Plate Database	10,000
License Plate Detection	Capture of vehicles with license plates and vehicles without license plate, Support plate exposure, travel direction recognition, plate character fault tolerance, plate comparison, snapshot time display Vehicle feature extraction: including vehicle color, plate color, vehicle type, vehicle brand/model, etc.
Capture Speed Range	0~80km/h / 0~120km/h

**GENERAL**

Power Supply	DC12V/AC24V/PoE
Power Consumption	< 12W
Storage Conditions	- 30 °C ~ 60 °C (-22°F~140°F); Humidity: less than 95 % (non-condensing)
Operating Condition	- 30 °C ~ 65 °C (-22°F~149°F); Humidity: less than 95 % (non-condensing)
Dimensions (mm)	278.3 × 100.2 × 88.7
Weight (net)	Approx. 1.176KG



An ISO 9001:2008 Certified Company